



# DEVELOPMENT STRATEGY FOR THE LUBLIN VOIVODSHIP until 2030

SYNTHESIS

lubelskie **2030**  
STRATEGIA ROZWOJU



LUBLIN 2021

**The Development Strategy for the Lublin Voivodeship until 2030** was developed under the supervision of **the Board of the Lublin Voivodeship** composed of

<b>Jarosław Stawiarski</b>	Marshal of the Lublin Voivodeship
<b>Zbigniew Wojciechowski</b>	Deputy Marshal of the Lublin Voivodeship
<b>Michał Mulawa</b>	Deputy Marshal of the Lublin Voivodeship since 3.12.2019
<b>Zdzisław Szwed</b>	Member of the Board of the Lublin Voivodeship
<b>Sebastian Trojak</b>	Member of the Board of the Lublin Voivodeship
<b>Dariusz Stefaniuk</b>	Deputy Marshal of the Lublin Voivodeship until 15.10.2019

The work on the *Strategy* was carried out with participation of the **Task Team** responsible for updating the Development Strategy of the Lublin Voivodeship for 2014-2020 (with a perspective until 2030) appointed by Order No. 128/2019 of the Marshal of the Lublin Voivodeship, **Jarosław Stawiarski**, of July 16, 2019, under supervision of the Deputy Marshal of the Lublin Voivodeship, **Zbigniew Wojciechowski**.

### **Edited and developed by**

Department of Strategy and Development  
Marshal's Office of the Lublin Voivodeship in Lublin  
under supervision of  
**Bogdana Kawałko** – Director of the Department of Strategy and Development

### **External expert**

Prof. dr hab. **Jerzy Bański**, PhD – Director of IGiPZ PAN (Institute of Geography and Spatial Organization of the Polish Academy of Sciences), Head of the Department of Rural Geography and Local Development

### **Cooperation**

dr. hab. **Zbigniew Pastuszak**, PhD – prof. UMCS, Department of Information Systems and Logistics, Institute of Management and Quality Sciences, Faculty of Economics, Maria Curie-Skłodowska University, with a team - development of the monitoring system

**EKKOM Sp. z o.o. Kraków** – development of the *Environmental Impact Forecast for the project of the Development Strategy of the Lublin Voivodeship until 2030*

**Instytut Badawczy IPC Sp. z o.o. Wrocław** – development of the *Ex-ante evaluation of the project of the Development Strategy of the Lublin Voivodeship until 2030*

### **Graphics, composition, DTP and printing**

E-BIT Edyta Wojciechowska-Jadczak

ISBN 978-83-963757-8-0

**The full version of the document is available on the website**

of the Marshal's Office of the Lublin Voivodeship in Lublin

[www.lubelskie.pl](http://www.lubelskie.pl)



**Dear All,**

On March 29, 2021, the Regional Parliament of the Lublin Voivodeship adopted the **Development Strategy for the Lublin Voivodeship until 2030**. It is the most important strategic document of our region, which defines the vision, goals and directions of activities for the coming years.

The strategy proposes a fundamental change in the approach to programming the development of the Lublin Voivodeship, adopting the model of sustainable and responsible development. The development vision and strategic goals defined in the Strategy result from the recognition of the real, most important challenges, needs and expectations of the region's residents.

The Strategy boldly focuses on agriculture - our greatest resource and potential. Moreover, the optimal use of the potential and development of cities, improving the residents' quality of life and the competitiveness of regional economy in the national and international environment, constitute a significant challenge.

The significance and scope of the territorial dimension of the Strategy has increased - the so-called territorialization. This means a stronger focus on the functional approach, the use of the individual features and potentials of individual areas of our voivodeship by designating 22 Areas of Strategic Intervention.

The presented document is a **synthesis** of the findings and the most important provisions of the Development Strategy of the Lublin Voivodeship until 2030 (SRWL 2030) adopted on March 29, 2021, by the Regional Parliament of the Lublin Voivodeship. The full version of SRWL 2030 is available on the website of the Marshal's Office of the Lublin Voivodeship in Lublin ([www.lubelskie.pl](http://www.lubelskie.pl)).

Marshal  
of the Lublin Voivodeship

**Jarosław Stawiarski**

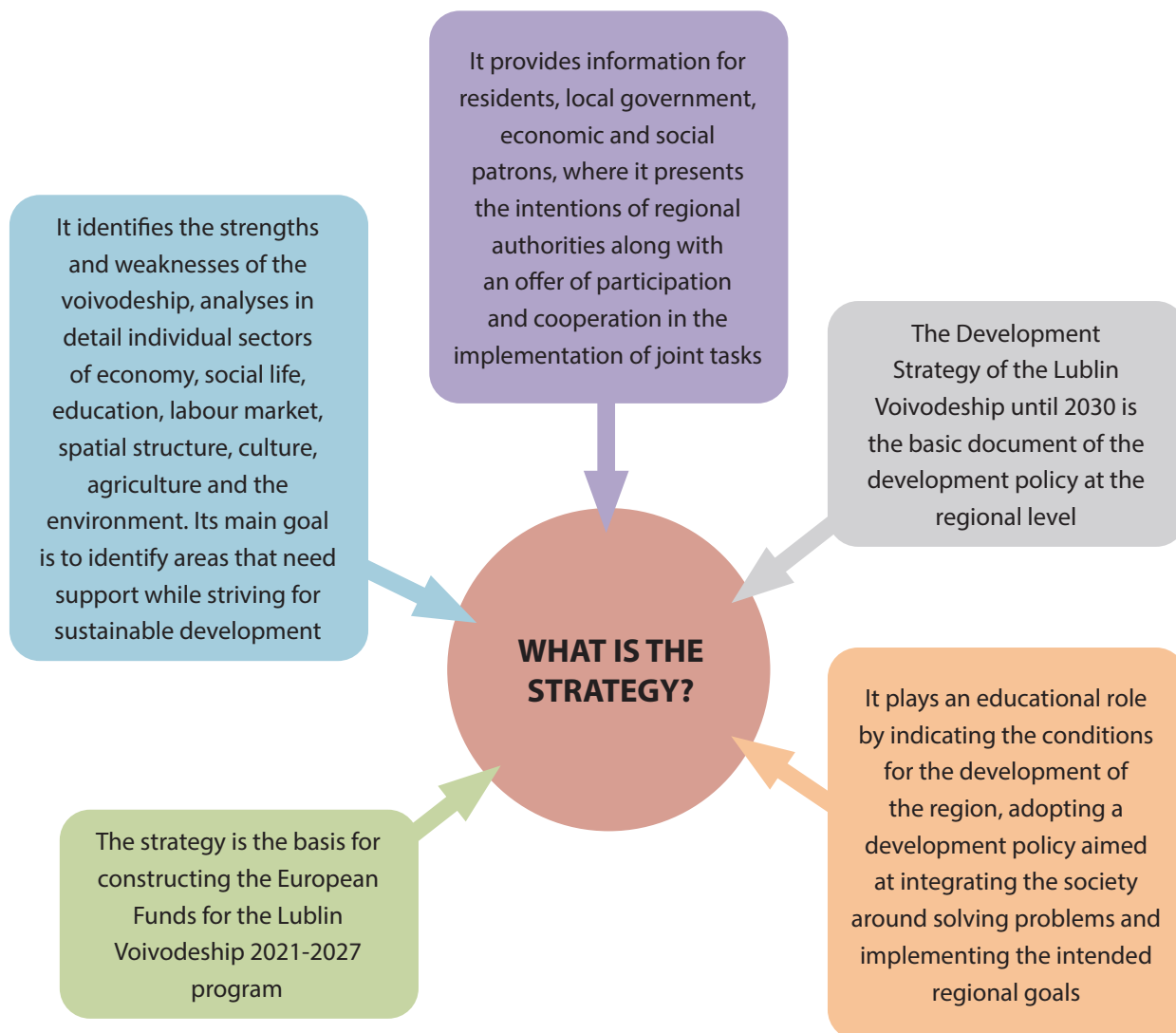
# CONTENTS

1. INTRODUCTION	3
2. SWOT ANALYSIS	4
3. VISION OF THE REGION'S DEVELOPMENT UNTIL 2030	5
4. STRATEGIC AND OPERATIONAL GOALS	6
5. OPERATIONAL GOALS AND ACTIVITIES	8
6. TERRITORIAL DIMENSION AND AREAS OF STRATEGIC INTERVENTION	24
6.1. AREAS OF STRATEGIC INTERVENTION OF REGIONAL IMPORTANCE	27
7. <i>STRATEGY</i> IMPLEMENTATION FRAMEWORK, MONITORING SYSTEM, SOURCES OF FINANCING	30
7.1. <i>STRATEGY</i> IMPLEMENTATION FRAMEWORK	30
7.2. MONITORING SYSTEM	31
7.3. SOURCES OF FINANCING	32

# 1. INTRODUCTION

This document constitutes a **synthesis of** findings and the most important provisions of the *Development Strategy of the Lublin Voivodeship* until 2030 adopted on March 29, 2021, by the Regional Parliament of the Lublin Voivodeship. The contents of this document present the most important challenges and development conditions, an analysis of the region's potential, visions as well as goals and directions of activities set to be implemented at the regional level until 2030. The presented territorial dimension includes the model of the functional and spatial structure of the Lublin Voivodeship and areas of strategic intervention.

Fig. 1. The significance and role of *SRWL 2030*



Source: developed by DSIR UMWL (Strategy and Development Department of the Marshal's Office of the Lublin Voivodeship), Lublin 2021

## 2. SWOT ANALYSIS

Fig. 2. SWOT Analysis



Source: developed by DSIR UMWL, Lublin 2021

### 3. VISION OF THE REGION'S DEVELOPMENT UNTIL 2030

On the basis of a detailed prospective diagnosis and numerous analyses, the local government of the Lublin Voivodeship defined a **vision of the region's development**. It outlines the processes and assumptions that the *Strategy* should initiate. The strengths, problems and challenges of the region presented in the diagnosis made it possible to present a number of activities influencing the socio-economic development of our region until 2030.

Fig. 3. Vision of the development of the Lublin Voivodeship until 2030



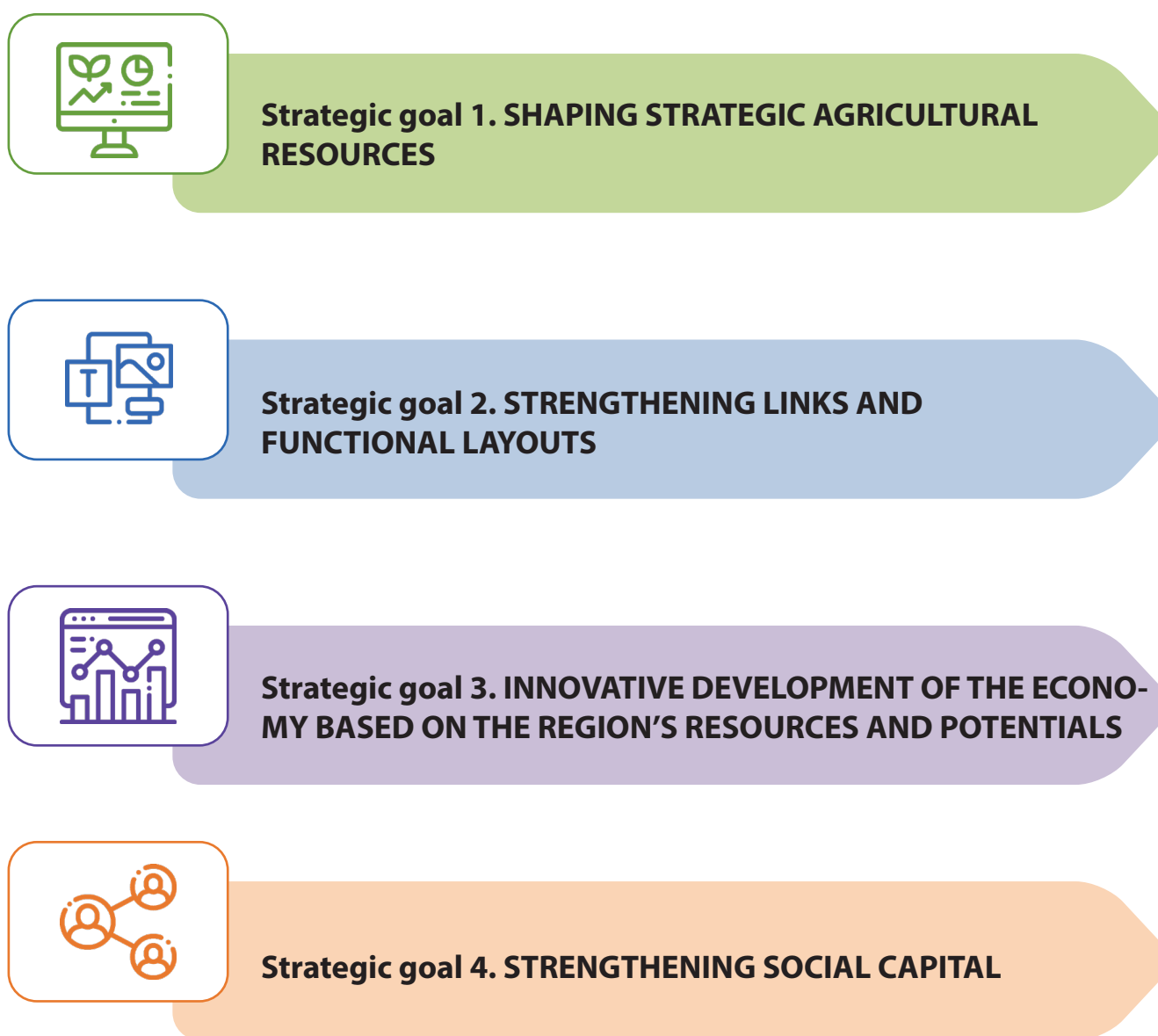
Source: developed by DSiR UMWL, Lublin 2021

## 4. STRATEGIC AND OPERATIONAL GOALS

The changes taking place, new conditions and socio-economic environment set **ambitious goals and development challenges** for all European regions, including the Lublin Voivodeship, for the coming years. In the horizon until 2030, *the Development Strategy of the Lublin Voivodeship* indicates four main strategic goals. The overriding idea is to use the development potential, improve the quality of life of residents and modernize the economy and innovation.

Strategic and operational goals create a **coherent and mutually complementary system** in which the effects of some goals generate and strengthen other effects, which constitute a reference point for all development activities in the Lublin region, including the directions of spatial development, as well as for the preparation of sectoral documents.

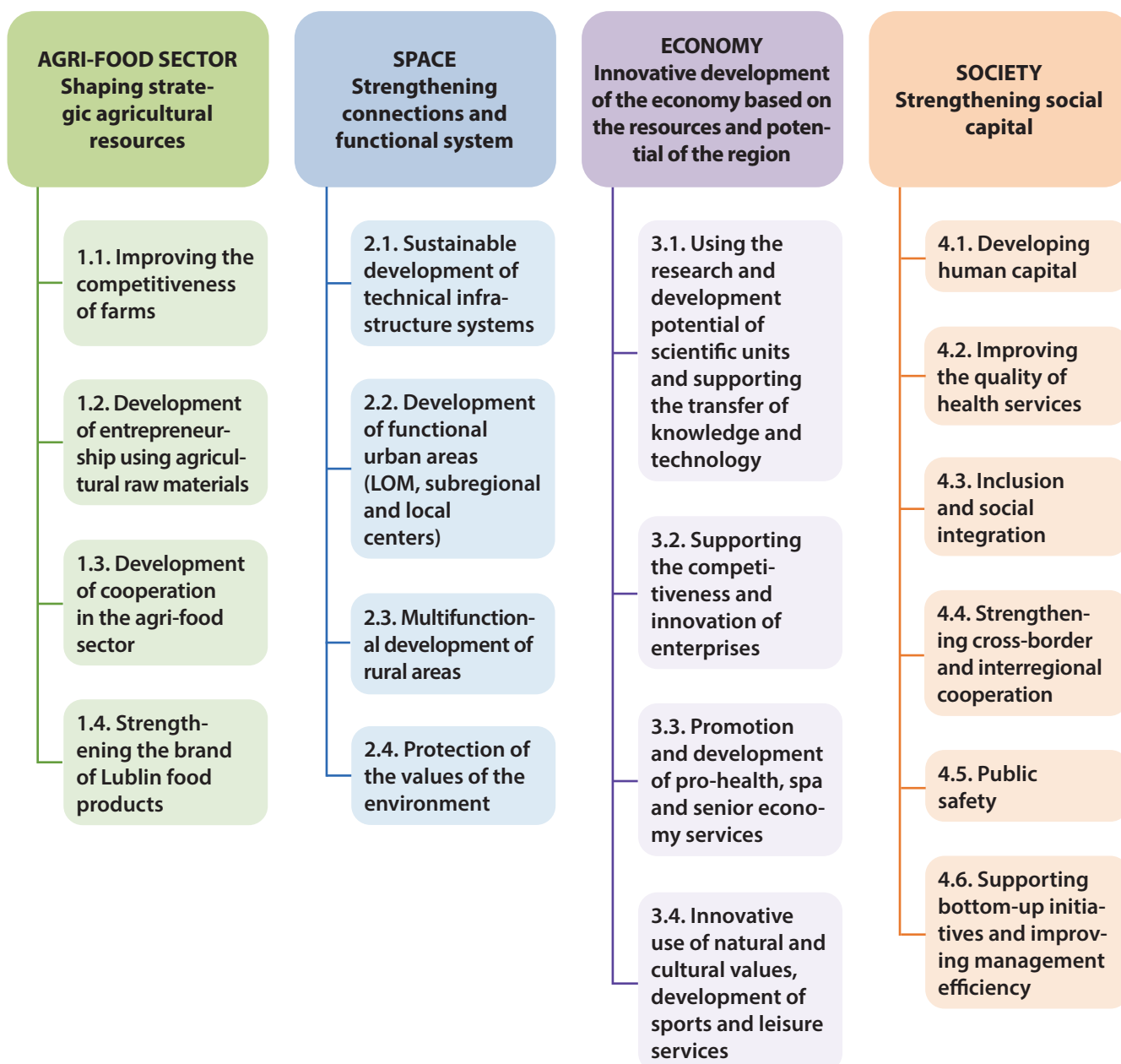
Fig. 4. System of strategic goals



Source: developed by DSiR UMWL, Lublin 2021



Fig. 5. Architecture of strategic and operational goals



Source: developed by DSiR UMWL, Lublin 2021

The strategic and operational goals indicated in the *Strategy*, as well as the directions of activities, should contribute to the **achievement of the adopted vision of the development of the Lublin Voivodship** until 2030. This will require the involvement of many communities and entities which, while pursuing their own goals and activities, will be guided by the goals agreed upon and adopted for the entire region.

## 5. OPERATIONAL GOALS AND ACTIVITIES



### Strategic goal 1. SHAPING STRATEGIC AGRICULTURAL RESOURCES

#### 1.1. Improving the competitiveness of farms

##### DIRECTIONS OF ACTIVITIES / DIRECTIONS OF INTERVENTION

- Improvement of water conditions (retention, melioration, irrigation, protection and better use of water resources)
- Improving the size and organizational structure of farms
- Development of agricultural retail trade and better linkage with wholesalers
- Strengthening innovation and technological advancement of farms
- Development of local agricultural specializations
- Soil protection (rationalization of the use of chemical fertilizers and plant protection products)
- Promoting the development of organic farming
- Increasing energy efficiency of farms
- Increasing the production and use of energy from renewable sources
- Development of retail trade and better relations with wholesalers (exchanges)
- Development of agritourism and rural tourism
- Reduction of excessive brokerage
- Improvement of work safety on farms

##### DIRECTIONS OF ACTIVITIES OF THE VOIVODESHIP LOCAL GOVERNMENT

- Performing consolidation works and post-consolidation development
- Preparation of a draft plan / program of directions for the development of energy in the voivodeship
- Development of a sectoral document on tourism development
- Supporting the development of agricultural management plans of communes and rural areas, constituting a diagnosis of communes' needs and directions for activities in the field of modernization of agricultural areas

##### EFFECTS

- Increasing productivity in agriculture
- Increasing profitability of agricultural production
- Increasing farmers' income
- Increasing the demand for various types of services for agriculture

## 1.2. Development of entrepreneurship using agricultural raw materials

### DIRECTIONS OF ACTIVITIES / DIRECTIONS OF INTERVENTION

- Supporting the construction of a network of connections between agricultural producers, producers of agricultural machinery, means of production and agri-food entrepreneurs
- Development of agri-food processing entities
- Development of infrastructure and storage facilities
- Development of industries that use agricultural raw materials for non-food purposes
- Increasing energy efficiency of production processes as well as the production and use of energy from renewable sources

### DIRECTIONS OF ACTIVITIES OF THE VOIVODESHIP LOCAL GOVERNMENT

- Creating conditions for the location of headquarters and entities of National Food Group in the Lublin Voivodeship
- Supporting local governments in their activities to stimulate the development of local entrepreneurship
- Development of a plan / program defining the directions of energy development in the voivodeship

### EFFECTS

- Increasing the level of employment in the region,
- Improving the economic conditions and income of the region's residents
- Increasing the revenues of enterprises and increasing the local tax base
- Location of non-agricultural forms of economic activity in less developed areas of a mono-functional nature

## 1.3. Development of cooperation in the agri-food sector

### DIRECTIONS OF ACTIVITIES / DIRECTIONS OF INTERVENTION

- Creation of an integrated system of receipt and distribution of products on a local, national and international scale
- Strengthening the cooperation network between agricultural producers, agri-food processing companies and universities (customer needs research)
- Development and professionalization of activities of farmers' organizations favouring the increase in efficiency of individual agricultural sectors
- Strengthening cooperation between the research and development sector and the production and processing sectors
- Development of the offer of services for the improvement of business competences in agriculture and agricultural consulting
- Shaping the region's brand as a competence centre in the field of natural and agricultural sciences

### DIRECTIONS OF ACTIVITIES OF THE VOIVODESHIP LOCAL GOVERNMENT

- Creating a promotion system for the offer of products from local / regional producers

### EFFECTS

- Development of knowledge, qualifications and skills of agricultural producers
- Creating a permanent network of cooperation between agricultural producers, the processing sector, distribution companies and the consulting industry

## 1.4. Strengthening the brand of Lublin food products

### **DIRECTIONS OF ACTIVITIES / DIRECTIONS OF INTERVENTION**

- Promotion and marketing support of Lublin food products
- Developing the offer of traditional, regional and organic products
- Popularizing information and shaping awareness among potential recipients about the properties of food products produced in the region

### **DIRECTIONS OF ACTIVITIES OF THE VOIVODESHIP LOCAL GOVERNMENT**

- Popularization of awarding the "Lublin" label to food products

### **EFFECTS**

- Increasing sales of food products on external markets (domestic and foreign)
- Development of the market of traditional, regional and organic products to contribute to the deepening of specialization and an increase in the revenues of entities operating in this sector
- Creation of new specialist jobs



## Strategic goal 2. STRENGTHENING LINKS AND FUNCTIONAL LAYOUTS

### 2.1. Sustainable development of technical infrastructure systems

#### DIRECTIONS OF ACTIVITIES / DIRECTIONS OF INTERVENTION

- Improvement of regional and interregional transport connections, taking into account the skeleton system of expressways and the planned A2 motorway, including the construction of city bypasses
- Improving the standard of services in public collective transport
- Development of local road systems, taking into account bicycle traffic on general terms, ensuring access to places of concentration of basic services, as well as infrastructure conducive to electromobility
- Improvement of regional and interregional rail connections, taking into account the CCP Central Communication Port Railway Program
- Functional development of regional airport Port Lotniczy Lublin S.A.
- Organization of an integrated public transport system
- Complementing gaps in high capacity telecommunications infrastructure
- Developing a portfolio of digital services and making them available to residents, entrepreneurs and tourists
- Expansion of the system of production, distribution and storage as well as monitoring of energy transmission, taking into account modern solutions
- Development of the national gas system and local systems using natural gas and biogas

#### DIRECTIONS OF ACTIVITIES OF THE VOIVODESHIP LOCAL GOVERNMENT

- Creation of a system of voivodeship roads favouring the facilitation of connections between various areas of the voivodeship with the national road network
- Continuation of activities aimed at eliminating asbestos-containing products from the environment and neutralizing them
- Implementation of tasks improving the infrastructure of voivodeship roads in accordance with the Strategic Transport Development Program for the Lublin Voivodeship
- Preparation of the Plan for the sustainable development of public transport in the Lublin Voivodeship
- Expansion of the voivodeship high capacity telecommunications infrastructure network
- Creating a service offer that stimulates the use of the infrastructure of the regional telecommunications network
- Preparation of a plan defining the directions of energy development in the voivodeship, taking into account conventional energy and use of renewable energy sources
- Development of a waste management plan

#### EFFECTS

- Increased mobility of residents with limited individual transport
- Strengthening economic ties both between the most important urban centres and between cities and their immediate hinterlands

## 2.2. Development of functional urban areas (LUCs, subregional and local centres)

### DIRECTIONS OF ACTIVITIES / DIRECTIONS OF INTERVENTION

- Counteracting uncontrolled urbanization of rural areas
- Leading degraded areas out of the crisis state (including revitalization)
- Developing the metropolitan functions of Lublin
- Strengthening the sub-regional functions of Biała Podlaska, Chełm, Puławy and Zamość
- Development of supra-local (supra-basic services) and specialist functions in powiat cities
- Organization of investment areas, including those for the development of logistics (e.g. based on the potential of the Port Lotniczy Lublin S.A)
- Stimulating the development of local entrepreneurship
- Integrating transport systems in functional urban areas that are environmentally friendly, taking into account infrastructure conducive to electromobility
- Supporting activities, including infrastructure activities in the field of adaptation to climate change and resilience to natural disasters, as well as reduction of pollutant emissions
- Introducing solutions based on the idea of smart city, with particular emphasis on social participation
- Counteracting uncontrolled urbanization of rural areas
- Integrating activities for the effective provision of social services

### DIRECTIONS OF ACTIVITIES OF THE VOIVODESHIP LOCAL GOVERNMENT

- Activities for the creation and development of the Lublin Metropolitan Railway
- Development of strategic programs, e.g. Program for the Strategic Development of Transport in the Lublin Voivodeship, Air Protection Program for the Lublin Zone, Plan for the Sustainable Development of Public Transport in the Lublin Voivodeship, a plan / program defining the directions for the development of the energy sector in the voivodeship

### EFFECTS

- The position of the city will be strengthened
- Better conditions will be created for the concentration of the population in the UFA
- The conditions for the operation of enterprises will improve
- Supra-local cooperation will have a positive impact on the quality and effectiveness of the provision of public services

## 2.3. Multifunctional development of rural areas

### DIRECTIONS OF ACTIVITIES / DIRECTIONS OF INTERVENTION

- Counteracting transport exclusion
- Improving access to basic social services
- Support for public services aimed at developing cultural activity, strengthening the sense of local identity and building a civic society
- Increasing the availability of telecommunications services provided at the local level
- Organization of investment areas and economic activity zones
- Stimulating the development of local entrepreneurship

### EFFECTS

- Improvement of living conditions in rural areas
- Development of the sphere supplementing the basic functions of agricultural production, serving to improve the economic situation of farms

## 2.4. Protection of environmental value

### DIRECTIONS OF ACTIVITIES / DIRECTIONS OF INTERVENTION

- Supporting activities for the monitoring of the state of the environment and the wide provision of information to residents
- Supporting activities for the growth of forest cover in the voivodship in accordance with the habitat conditions
- Supporting activities for water management in the extractive industry with the use of innovative technologies
- Protection of natural values, including landscape, habitats and biodiversity
- Increasing the environmental awareness of the inhabitants
- Increasing energy efficiency of buildings and public infrastructure and reducing low emissions
- Development of low-emission and zero-emission generation capacity
- Supporting activities for the reclamation and revitalization of degraded and post-exploitation areas as well as the development of post-industrial areas and facilities
- Activities in the field of preventing the waste of goods and food at the stage of production, processing and consumption
- Implementation of a rational waste management system aimed at increasing re-use, recycling and recovery of raw materials and energy

### DIRECTIONS OF ACTIVITIES OF THE VOIVODESHIP LOCAL GOVERNMENT

- Activities for the removal of asbestos-containing products
- Development of a landscape audit
- Consulting in the field of energy efficiency and renewable energy sources (for enterprises, the municipal sector, housing construction, local government units)
- Raising the environmental awareness of society in the field of environmental protection and natural values of the voivodship
- Development of Programs: air protection for the Lublin zone; air protection for the Lublin agglomeration zone; Landscape audit; environmental protection program of the Lublin Voivodeship Landscape park protection plans; Waste management plan for the Lublin Voivodeship

### EFFECTS

- Improvement of the quality parameters of individual environmental components (air, water, soil)
- Increasing the awareness of residents in the generation of municipal waste and the development of the renewable energy sector



## **Strategic goal 3. INNOVATIVE DEVELOPMENT OF ECONOMY BASED ON THE REGION'S RESOURCES AND POTENTIALS**

### **3.1. Using the research and development potential of scientific units and supporting the transfer of knowledge and technology**

#### **DIRECTIONS OF ACTIVITIES / DIRECTIONS OF INTERVENTION**

- Supporting the professionalization and network cooperation of units and organizations involved in the transfer of knowledge and technology
- Improving the quality of scientific research, including through cooperation of research teams of scientific and research units, strengthening their links in the national and international system, as well as the development of human resources
- Stimulating cooperation for the use of research infrastructure and scientific potential of Lublin universities and enterprises
- Identification and support for the development of new, prospective industries based on the specific resources of the region (regional smart specializations), including those related to the energy transformation process
- Implementing innovative solutions, developing knowledge diffusion mechanisms thanks to multi-sector cooperation (including clusters, consortia, cooperation platforms, innovation centres)
- Improving the quality of teaching activities through the development of research infrastructure and wider cooperation with the economic environment
- Supporting the formation and initial operation of start-ups
- Adjusting the directions of education activities and supporting the possibility of acquiring innovative qualifications, drawing attention to the needs of the labour market and entities operating in industries belonging to regional smart specializations
- Inclusion of scientific research and didactic cooperation in the areas serving to strengthen the specialization and competitiveness of the regional economy in international networks

#### **DIRECTIONS OF ACTIVITIES OF THE VOIVODESHIP LOCAL GOVERNMENT**

- Undertaking coordination activities for the creation of a regional system of innovation
- Identification and support for the development of regional smart specializations
- Preparation of the Regional Innovation Strategy

#### **EFFECTS**

- Strengthening the competitiveness of Lublin companies
- Improving the scientific position of universities and research and development institutions operating in the Lublin Voivodeship,
- Better adjustment of the qualifications of university graduates to the needs of the regional market



## 3.2. Supporting the competitiveness and innovation of enterprises

### DIRECTIONS OF ACTIVITIES / DIRECTIONS OF INTERVENTION

- Facilitating access to business consulting, services aimed at developing competences and skills needed in a modern economy for entrepreneurs
- Building export potential and internationalization of enterprises' activities
- Support for technical and organizational solutions to reduce energy consumption and emission intensity of enterprises
- Supporting enterprises in using new ideas and business models to adapt their activities to crisis situations
- Development of industries serving the agri-food sector (e.g. packaging, machinery)
- Fostering initiatives as well as supporting and implementing new business segments
- Creating a favourable climate and conditions for investment (internationalization of the region's economy)
- Development of the logistics sector (infrastructure, management systems, services, competences and skills of human resources)
- Supporting the use of modern solutions increasing the competitiveness of enterprises (including automation, robotization and digitization of production, service and organizational processes, saving resources)

### DIRECTIONS OF ACTIVITIES OF THE VOIVODESHIP LOCAL GOVERNMENT

- Supporting enterprises in obtaining the Status of Known Consignor, which enables them to participate in the European system of secure supply chain
- Creating and updating regional databases of enterprises, exporters, business environment institutions, investment offers, as well as monitoring of external markets
- Animating cooperation to create a coherent system of logistic services supporting international trade in goods

### EFFECTS

- Implementation of the activities that contribute to an economy that is more resistant to crisis shocks, able to maintain and create sustainable jobs
- Increasing the region's income base
- Increasing the use of the development potential and inducing a positive change in the economic structure of the region
- Strengthening economic attractiveness of the voivodeship

### 3.3. Promotion and development of pro-health, spa and senior economy services

#### **DIRECTIONS OF ACTIVITIES / DIRECTIONS OF INTERVENTION**

- Supporting the development of health tourism
- Development of the function and base of spa treatment in the areas with natural healing factors
- Supporting the development of modern solutions in medicine, in pro-health and care services as well as in health prophylaxis and rehabilitation
- Development of infrastructure and systems enabling the development of telemedicine, telecare and telerehabilitation
- Supporting activities aimed at promoting a healthy lifestyle
- Development of infrastructure and services for the care of the elderly and disabled, as well as solutions to maintain their independence
- Increased access to therapeutic rehabilitation and spa treatment

#### **DIRECTIONS OF ACTIVITIES OF THE VOIVODESHIP LOCAL GOVERNMENT**

- Supporting the development of spa areas, including: Krasnobród, Biszczka, Nałęczów
- Development of technical infrastructure to strengthen spa functions (including the construction of the Nałęczów bypass)
- Profiling of services increasing the quality of services provided by the voivodeship medical entities - treatment centres
- Dissemination of telemedicine solutions in the voivodeship medical entities
- Extending the offer of health services in the field of health promotion, treatment and rehabilitation for people from outside the Lublin Voivodeship
- Strengthening the rehabilitation and spa base with the use of the natural values of the region
- Establishing a health resort managed by the Lublin Voivodeship
- Implementation of preventive measures, health policy programs and promotion of pro-health behaviours addressed in accordance with the needs of the voivodeship residents
- Establishing care facilities for seniors, supporting the elderly and the disabled in their place of residence
- Development of a health sector strategy for the Lublin Voivodeship

#### **EFFECTS**

- Increasing the number of people from outside the region using pro-health services
- Greater use of the existing spa potential

### 3.4. Innovative use of natural and cultural values, development of sports and leisure services

#### **DIRECTIONS OF ACTIVITIES / DIRECTIONS OF INTERVENTION**

- Developing the offer and infrastructure of centres combining educational, cultural and recreational functions based on new trends in tourism
- Development of products and the offer of events using unique local resources, e.g. creation of the "Grody Czerwieńskie" Historical and Archaeological Centre
- Organization of service points for motorized tourism
- Dissemination of modern forms of access to culture and information on natural resources, using digital technologies
- Development of infrastructure conducive to the creation of a diversified offer based on various forms of tourism
- Supporting the development of creative and cultural industries, entrepreneurship based on local resources, cultural heritage and educational services
- Integration of cooperation, promotion, information and management in tourism based on the system operating in Poland: Polish Tourist Organization - Regional Tourist Organizations - Local Tourist Organizations
- Development of sports and recreational services and infrastructure
- Popularization and development of sport among various social and environmental groups
- Supporting sports activities in the region and promoting physical education
- Protection of cultural heritage resources, including developing the utility function of cultural facilities

#### **DIRECTIONS OF ACTIVITIES OF THE VOIVODESHIP LOCAL GOVERNMENT**

- Strengthening the potential of voivodeship, local government cultural institutions and tightening cooperation between them
- Construction of the Regional Sports Centre
- Establishment of the Lublin Centre for Environmental / Nature Education
- Actions to improve the state of preservation of historic buildings constituting the property of the Lublin Voivodeship
- Supporting the organization and creating infrastructure to preserve the memory and historical heritage of the Lublin Voivodeship
- Development of a sectoral document in the field of tourism development
- Development of a sectoral document on the development of sport
- Implementation of the Voivodeship Program for the Protection of Monuments in the Lublin Voivodeship

#### **EFFECTS**

- Creating non-standard products, associated only with the Lublin Voivodeship
- Strengthening the image and position of the region as an inviting place of rest, thanks to the hospitality of its residents
- increasing social ties, regional integration, as well as professional activation of residents



## Strategic goal 4. STRENGTHENING SOCIAL CAPITAL

### 4.1. Developing human capital

#### DIRECTIONS OF ACTIVITIES / DIRECTIONS OF INTERVENTION

- Raising qualifications of the teaching staff
- Adjusting the activities of labour market institutions to the needs of changing economy
- Activities for “lifelong learning” (improving knowledge, competences, skills and changing qualifications, including for people with special educational needs)
- Developing education (especially vocational), improving teachers’ competences, modernizing the teaching base, supporting the social / educational role of schools and educational institutions
- Disseminating and improving the quality of pre-school education
- Shaping and strengthening civic, pro-social activity (e.g. volunteering in non -governmental organizations) and entrepreneurial attitudes
- Strengthening cultural education
- Promotion of a healthy lifestyle
- Education in the field of social, economic, ecological and ethical consequences of food waste (actions aimed at conscious consumption and reducing the amount of food waste)
- Supporting activities aimed at seniors (helping maintain their independence, activity and use of their intellectual potential)
- Creating conditions enabling the reconciliation of professional and family responsibilities, including caring for children and dependents
- Activities for the professional activation of unused labour resources
- Using conclusions from the regional entrepreneurial discovery process to forecast the needs of local labour markets and support specific directions of vocational education
- Improving the situation of the unemployed on the labour market and working conditions
- Disseminating e-learning solutions, including equipping schools and educational institutions with appropriate tools

#### DIRECTIONS OF ACTIVITIES OF THE VOIVODESHIP LOCAL GOVERNMENT

- Monitoring and programming the situation and trends in the labour market, including the demand for specific qualifications and competences
- Supporting artistic debuts (including musical, literary) and promoting talents and particularly gifted people through scholarship programs and awards

#### EFFECTS

- Increased economic activity of the region’s residents
- Increasing entrepreneurship and limiting the scale of unemployment
- Better adjustment of employees’ qualifications to the needs of the labour market

## 4.2. Improving the quality of health services provision

### **DIRECTIONS OF ACTIVITIES / DIRECTIONS OF INTERVENTION**

- Strengthening medical staff and entities responsible for medical education
- Strengthening the role of primary health care in providing health services aimed at improving access to outpatient specialist and inpatient care
- Creating and adapting the infrastructure of health care facilities in the field of priority areas for the Lublin Voivodeship, particularly oncological facilities
- Development and improvement of the availability and quality of medical services provided
- Development of health and social services
- Promoting the use of modern solutions in healthcare and general care units (e-health, telemedicine, remote care, etc.)
- Coordination of health care, social assistance, long-term care and rehabilitation activities
- Development of health prophylaxis and rehabilitation
- Use of intellectual potential and the rank of the research and development centre in the field of health protection
- Supporting activities aimed at increasing the functionality of the health care system in crisis situations
- Providing infrastructure conditions for the needs of patients and their families (parking lots, hospital hotels)

### **DIRECTIONS OF ACTIVITIES OF THE VOIVODESHIP LOCAL GOVERNMENT**

- Creation and development of specialized medical centres
- Profiling of voivodeship health care units
- Dissemination of telemedicine solutions in voivodeship medical entities
- Supporting the creation of Social Service Centres
- Deepening the integration of activities of units and institutions providing health and care services
- Development and implementation of health policy programs
- Development of a sector strategy in the field of health care for the Lublin Voivodeship
- Development of the Social Policy Strategy for the Lublin Voivodeship

### **EFFECTS**

- Expanding the possibilities of access and use of care and health services for the region's residents
- Easy access to services especially for the most excluded social groups, seniors and people with disabilities

## 4.3. Inclusion and social integration

### **DIRECTIONS OF ACTIVITIES / DIRECTIONS OF INTERVENTION**

- Development of social innovations
- Supporting intergenerational integration
- Activation of local communities and strengthening the sense of identity and integration
- Projects for social integration and professional activation of people and families excluded or at risk of poverty and social exclusion
- Development of the social and solidarity economy sector
- Development of social innovations
- Addiction prevention
- Counteracting aggression and violence in the family and among children and adolescents
- Providing conditions for the organization of psychological and pedagogical support for children and adolescents
- Activation of local communities and strengthening the sense of identity and integration
- Supporting families in fulfilling their care and educational functions
- Development of care services dedicated to various social groups
- Supporting intergenerational integration

### **DIRECTIONS OF ACTIVITIES OF THE VOIVODESHIP LOCAL GOVERNMENT**

- Establishment and launch of the FAS / FASD Diagnosis and Therapy Centre
- Strengthening the family support system, creating a positive image of family, cooperation between entities operating for the benefit of the child and the family
- Development of the Social Policy Strategy for the Lublin Voivodeship, Voivodeship Program for Counteracting Drug Addiction, Voivodeship Program for Prevention and Resolving Alcohol-related Problems, Voivodeship Program for Counteracting Domestic Violence
- Development of the Regional Program for Social Assistance and Social Inclusion, Regional Program for the Development of Social Economy in the Lublin Voivodeship, Program for equalizing opportunities for people with disabilities and counteracting their social exclusion as well as assistance in the implementation of tasks for the employment of disabled people

### **EFFECTS**

- Improving social relations and limiting the group of people requiring support from social assistance institutions
- Extending the scope of activities of entities from the social economy sector

## 4.4. Strengthening transgenic and interregional cooperation

### DIRECTIONS OF ACTIVITIES / DIRECTIONS OF INTERVENTION

- Cooperation with other regions in Poland and abroad in relation to common cultural and historical heritage
- Supporting cooperation between regions of Eastern Poland in the implementation of supra-regional initiatives
- Supporting new connections and development opportunities resulting from the construction of the S19 North-South "Via Carpatia" route
- Supporting activities for the protection of natural resources in border areas and the development of integrated cross-border tourism
- Supporting the development of education, training and use of specialized labour force
- Construction and expansion of border crossings and their adaptation to servicing tourist traffic and improving accessibility to border crossings (roads, railway lines, buffer car parks, airport, tourist infrastructure)

### DIRECTIONS OF ACTIVITIES OF THE VOIVODESHIP LOCAL GOVERNMENT

- Supporting the existing institutional forms of cooperation, such as the Euroregion "Bug" and the creation of the Euroregion "Roztocze"
- Lobbying and cooperation with central institutions responsible for border crossings
- Establishing an international Economic Network of the Three Seas Regions under the Three Seas Initiative
- Development of a Strategy for Cross-Border Cooperation with regions bordering the Lublin Voivodeship (Belarus and Ukraine) in order to jointly use the development potential
- Preparation of the Strategic Transport Development Program for the Lublin Voivodeship
- Preparation of the Development Plan for the Voivodeship Road Network
- Development of a document entitled Priorities of foreign cooperation of the Lublin Voivodeship
- Implementation of interregional projects with partners from the EU and beyond in the field of innovation, environmental protection, education, health, tourism, culture, exchange of experiences

### EFFECTS

- Developing new functions related to logistics, handling international trade and cross-border tourism
- Limiting negative phenomena for peripheral areas, especially poviats most affected by the direct influence of the border

## 4.5. Public safety

### **DIRECTIONS OF ACTIVITIES / DIRECTIONS OF INTERVENTION**

- Increasing the resilience of public services to crisis situations
- Improving road safety and safety at the state border
- Supporting services responsible for removing the effects of violent climatic events / natural disasters and services responsible for public safety
- Implementation of solutions increasing traffic safety, incl. by automating the processes of traffic control and management
- Strengthening sanitary and epidemiological safety
- Education of residents in the field of safety at home, at school, on the road, on the Internet, in contacts with strangers
- Raising awareness in the field of cybersecurity
- Support and development of environmental forecasting and warning systems
- Strengthening flood protection

### **DIRECTIONS OF ACTIVITIES OF THE VOIVODESHIP LOCAL GOVERNMENT**

- Strengthening infectious wards and prevention systems against infectious diseases
- Supporting activities for the integration of public safety management systems and information exchange
- Preparation of the Strategic Transport Development Program for the Lublin Voivodeship
- Development of a sector strategy in the health care of the Lublin Voivodeship

### **EFFECTS**

- Effective response in crisis situations
- Taking preventive measures on a larger scale to limit losses in the economy and increase the sense of security of the region's residents



## 4.6. Supporting bottom-up initiatives and improving management efficiency

### DIRECTIONS OF ACTIVITIES / DIRECTIONS OF INTERVENTION

- Developing the competences of local government units in planning and programming initiatives
- Promoting greater involvement of private funds in major development projects, including in the public-private partnership formula
- Promoting innovative solutions conducive to the effectiveness of public administration activities, including those using the potential of regional universities
- Building partnerships for initiatives that require multi-level and inter-institutional cooperation
- Balancing the areas of distribution network through cooperation with the Distribution Network Operator, renewable energy prosumers, energy clusters, energy cooperatives
- Improving the availability of spatial data resources at the national, regional and local level
- Computerization, providing public resources and data, including those facilitating investment and running a business
- Raising digital competences in the field of cybersecurity
- Building the image of the region and creating the identity brand of the Lublin Voivodeship
- Supporting and popularizing the regionalism movement, including folklore
- Networking of cooperation between voivodeship local government cultural institutions and entities conducting cultural activity
- Promoting literary creativity
- Promotion of contemporary culture
- Supporting valuable forms of reading promotion

### DIRECTIONS OF ACTIVITIES OF THE VOIVODESHIP LOCAL GOVERNMENT

- Support for local government units in planning energy development of given communes
- Involving non-governmental organizations in creating public policies at the regional level
- Modernization and development of the Regional Infrastructure for Spatial Information of the Lublin Voivodeship and the ICT system of the voivodeship part of the state geodetic and cartographic resource
- Digitization, improving the quality of data and services of the state geodetic and cartographic resource at the voivodeship and powiat level
- Integrated management of library processes
- The use of modern tools and means of communication to promote events, initiatives and activities of the Local Government of the Lublin Voivodeship
- Supporting infrastructural and organizational solutions conducive to the improvement of the effectiveness of public administration activities

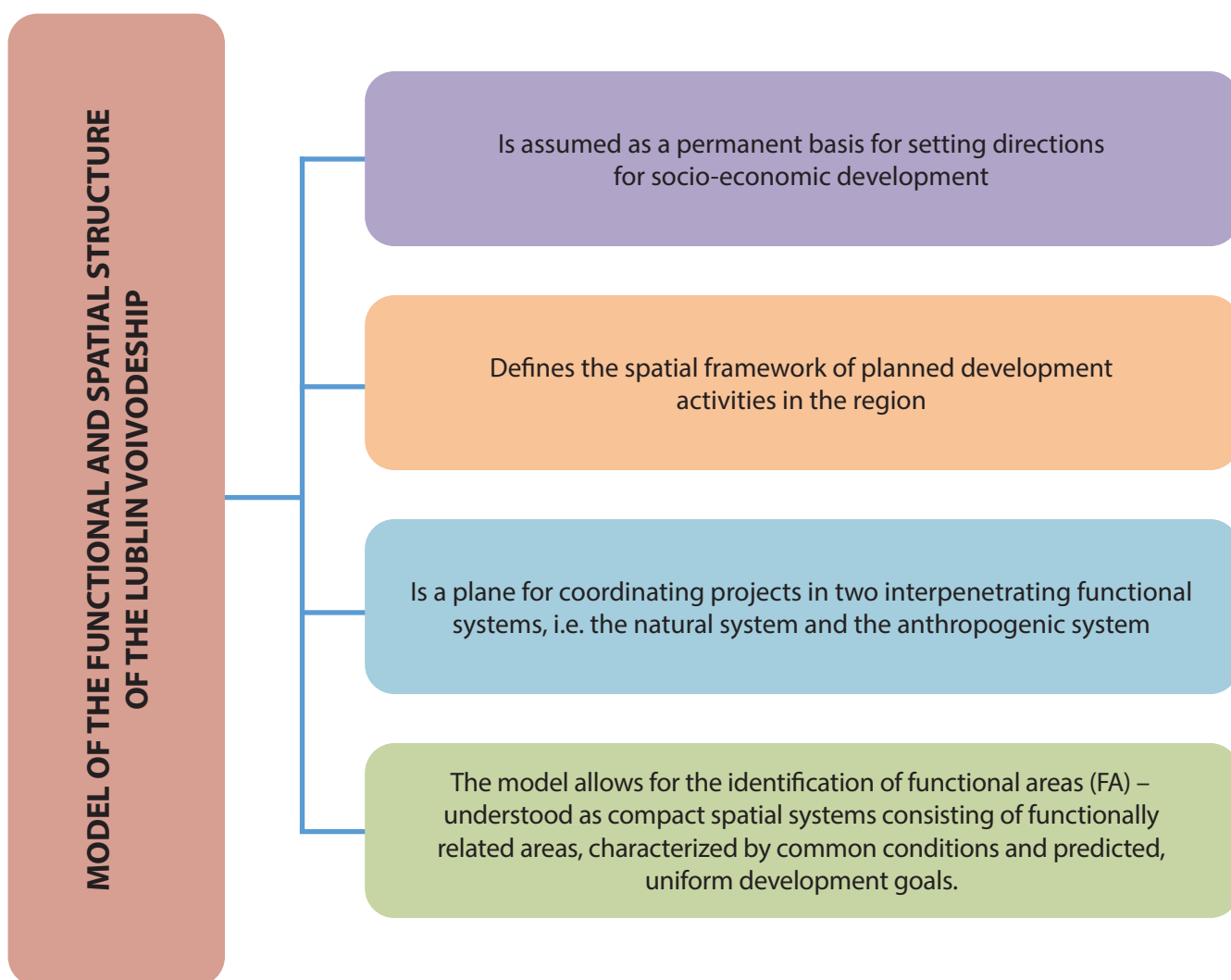
### EFFECTS

- Improving the efficiency of public finance sector expenditure
- Improving the functioning and use of the effects of implemented projects
- Digitization of public surveying registers to minimize the need for direct contact between the office and a citizen or entrepreneur

## 6. TERRITORIAL DIMENSION AND AREAS OF STRATEGIC INTERVENTION

The model of the functional and spatial structure of the Lublin Voivodeship defines the **spatial framework of the planned development activities** in the region. It is also a **plane for coordinating projects** in two interpenetrating functional systems, i.e. the natural system and the anthropogenic system.

Fig. 6. Model of the functional and spatial structure of the Lublin Voivodeship

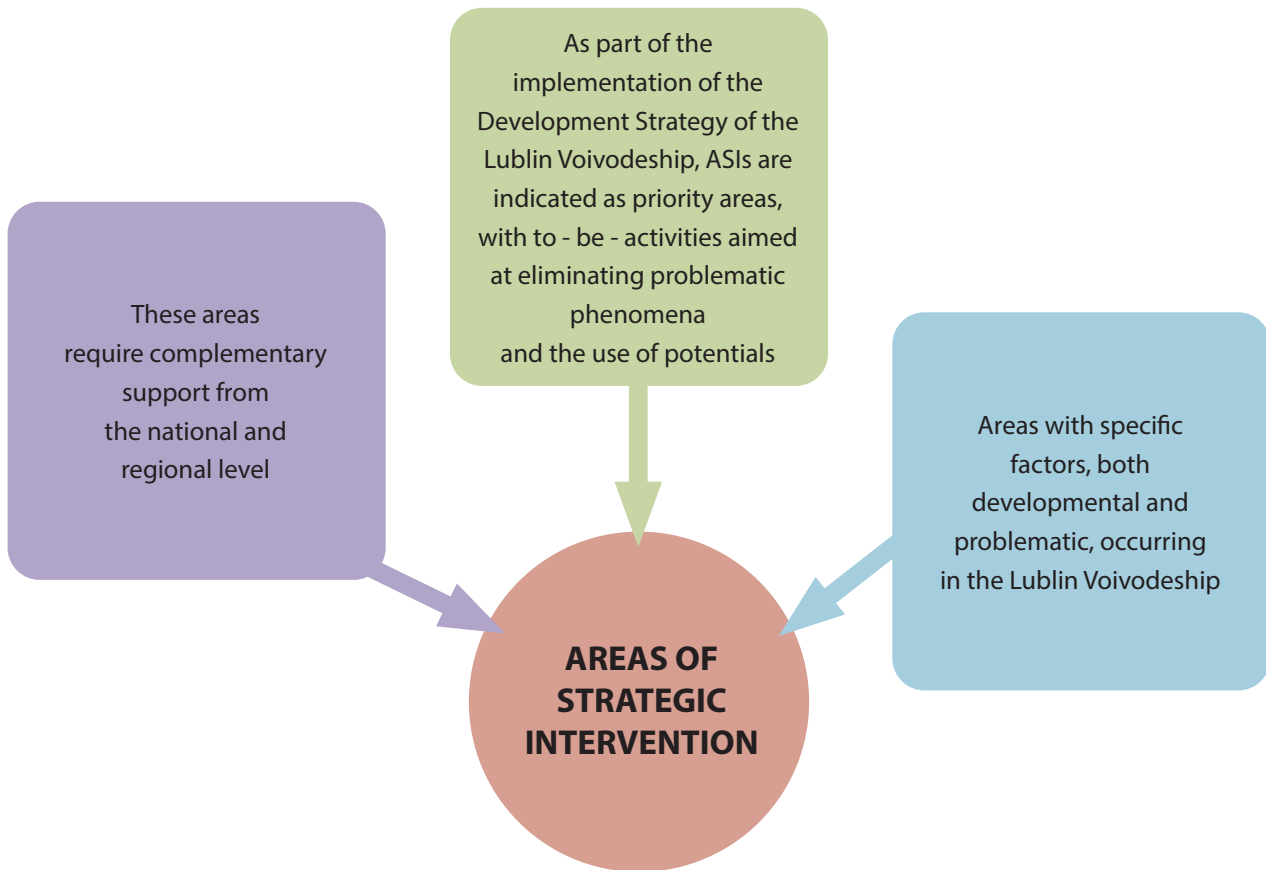


Source: developed by DSiR UMWL, Lublin 2021

Due to the need to **integrate and concentrate development activities** for the development of functional relationships in supra-local systems, as part of **shaping the model of the functional and spatial structure** of the Lublin Voivodeship and due to the need to target support, **Areas of Strategic Intervention (ASIs)** have been defined at the regional level.

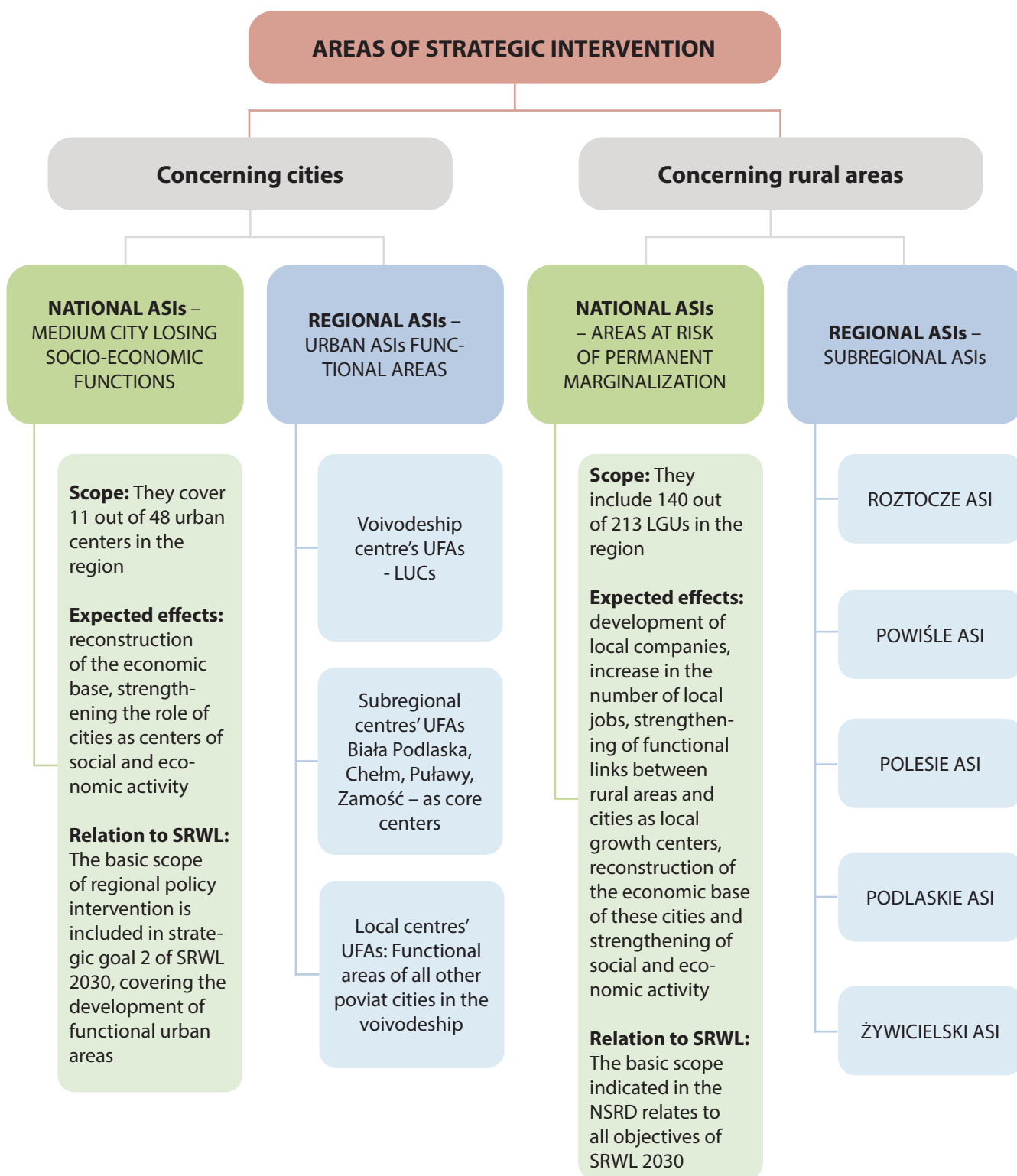
Areas of Strategic Intervention (ASIs) constitute a spatial reflection of the **development potentials and problems** in the Lublin Voivodeship. These are **areas of priority importance for the Voivodeship Local Government**, and their designation results from the **rational need to concentrate interventions** on a specific territory.

Fig. 7. Areas of Strategic Intervention



Source: developed by DSiR UMWL, Lublin 2021

Fig. 8. Areas of Strategic Intervention designated at the national and regional level



Source: developed by DSiR UMWL, Lublin 2021

## 6.1. AREAS OF STRATEGIC INTERVENTION OF REGIONAL IMPORTANCE

Areas of strategic intervention of **regional importance** (i.e. sub-regional ASIs and UFAs' ASIs) constitute an expression of the decision made regarding the need for special support for the implementation of selected directions of SRWL activities in specific areas of the voivodeship.

Functional Urban Areas (FUAs) of sub-regional centres and FUAs of local centres constitute a **spatially and functionally integral structure** within sub-regional ASIs.

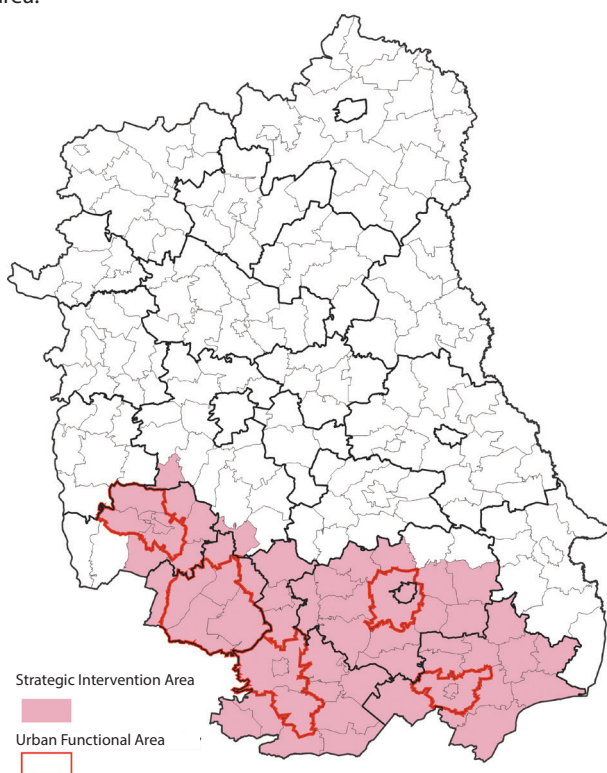
### ROZTOCZE ASI

#### Development priority

Socio-economic use of the resources of the natural and cultural environment of Roztocze and the Solska Primeval Forest.

#### Main features

Areas with high tourist potential, sightseeing values and high forest cover, which in communes exceeds 50% of the surface area.



#### Flagship projects

- Implementation of the Via Carpatia / S19 express road
- Implementation of the Warsaw-Lviv railway route
- Extension of the base and infrastructure of the Krasnobród health resort
- Establishment of the "Stone Forest in Roztocze" Geopark
- Expansion of the Central Cycling Trail of Roztocze
- Extension of Green Velo;
- Organization of the Wooden Architecture Trail of the Lublin Voivodeship
- Supporting the expansion of the existing and construction of new infrastructure improving accessibility to border crossings (roads, railroads, buffer car parks, tourist infrastructure)
- Development of protection plans and plans of protective tasks for areas covered by the legal form of nature protection

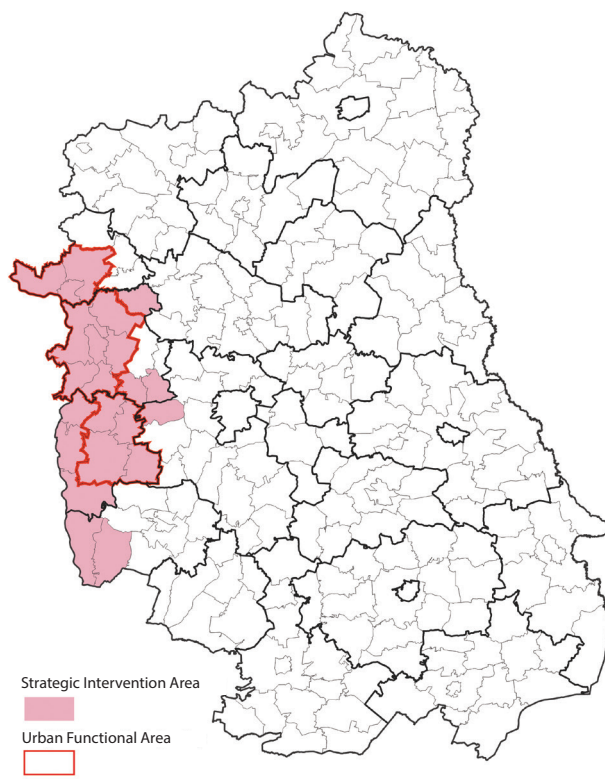
### POWIŚLE ASI

#### Development priority

Socio-economic use of the resources of the natural and cultural environment of the Vistula areas.

#### Main features

An area with a well-developed tourist service base in the so-called tourist triangle: Kazimierz Dolny-Naęczów-Puławy.



#### Flagship projects

- Implementation of the S12 express road, section Radom-Puławy
- Implementation of the Warsaw-Lviv railway route
- Expansion of the base and infrastructure of the Naęczów health resort
- Implementation of the process of obtaining the status of a health resort in the areas of natural healing factors (mineral waters, climate properties) in the Wąwolnica commune (Celejów)
- Establishment of the Lesser Poland Gorge of the Vistula Geopark
- Development of the tourist infrastructure of the Vistula Narrow Gauge Railway
- Construction of the Vistula Cycling Route
- Organization of the Wooden Architecture Trail of the Lublin Voivodeship
- Development of protection plans and plans of protective tasks for areas covered by the legal form of nature protection

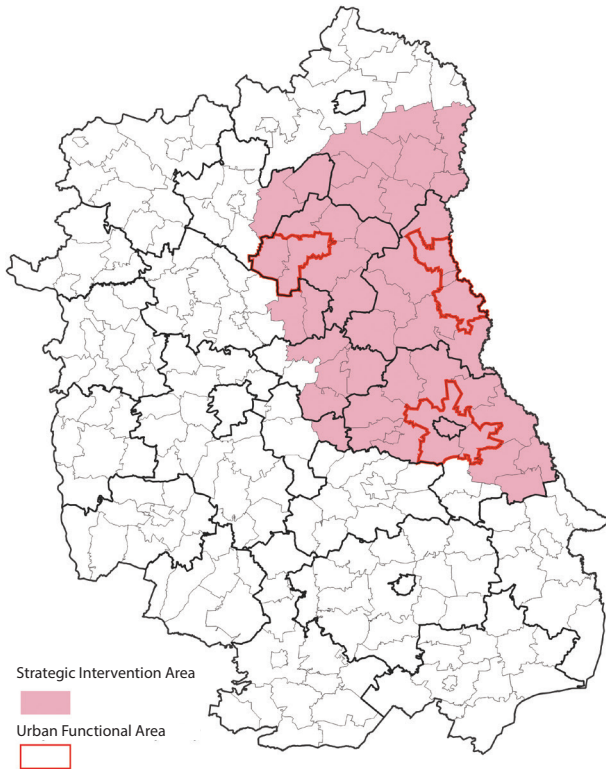
## POLESIE ASI

### Development priority

Socio-economic use of the natural and cultural resources of the Łęczyńsko-Włodawskie Lakeland and the Bug River areas

### Main features

A naturally valuable area with a significant amount of peat bogs and wetlands as well as natural and artificial water reservoirs, conducive to the development of fisheries



### Flagship projects

- Revitalization of the Wieprz-Krzna Canal System
- Construction of the S12 express road, including the construction of the Chełm bypass
- Organization of the Wooden Architecture Trail of the Lublin Voivodeship
- Promotion and development of the tourist base and infrastructure of the Jagiellonian Trail
- Development of protection plans and plans of protective tasks for areas covered by the legal form of nature protection

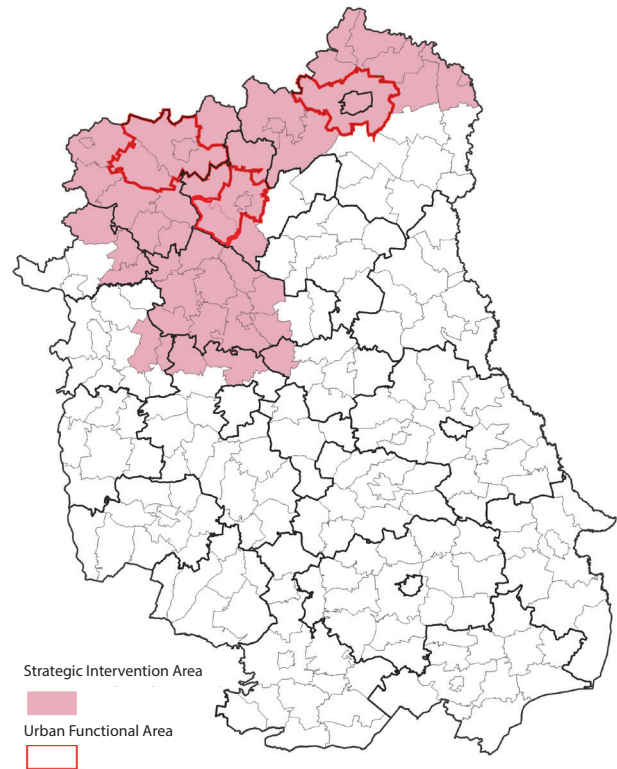
## PODLASKIE ASI

### Development priority

Economic use of the potential of national and European transport corridors

### Main features

The area is located on the directions of the national and European transport connections - the Northern Range of Economic Activity



### Flagship projects

- Construction of the A2 motorway
- Implementation of the Via Carpatia / S19 express road
- Reconstruction of the Terespol-Brest railway border crossing
- Construction of railway line No. 631 (Milanów-Biała Podlaska-Fronolów)
- Reconstruction of the railway station in Łuków
- Development of protection plans and plans of protective tasks for areas covered by the legal form of nature protection

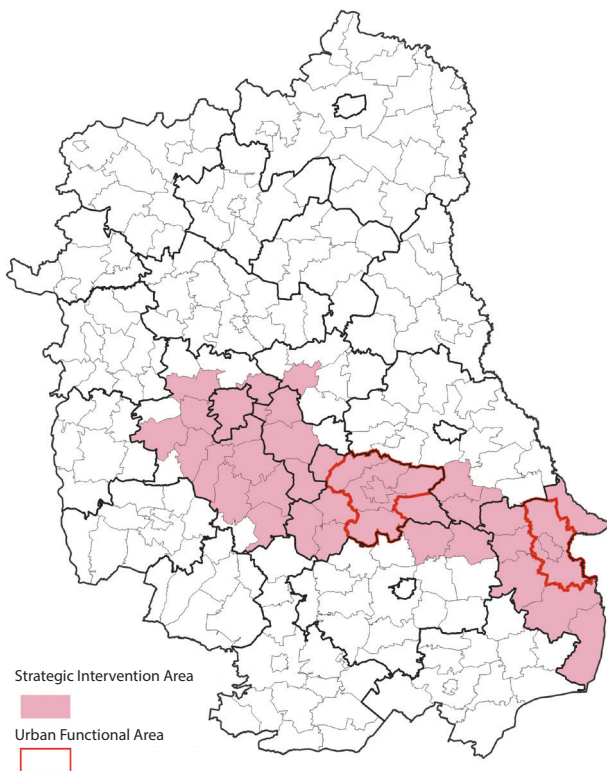
## ŻYWICIELSKIE ASI

### Development priority

Use of natural resources of the Lublin Upland for the development of competitive agriculture

### Main features

The area of high concentration of soils with the highest suitability for food production and development of commercial agriculture



### Flagship projects

- Construction of the S17 expressway
- Reconstruction of national road No. DK74
- Implementation of the Warsaw-Lviv railway route
- Construction of railway line No. 54 (Trawniki-Krasnystaw Miasto)
- Expansion, modernization and automation of LHS stations
- Development of protection plans and plans of protective tasks for areas covered by the legal form of nature protection
- Updating local planning documents in terms of taking into account the activities and development conditions resulting from protection plans and plans of protective tasks

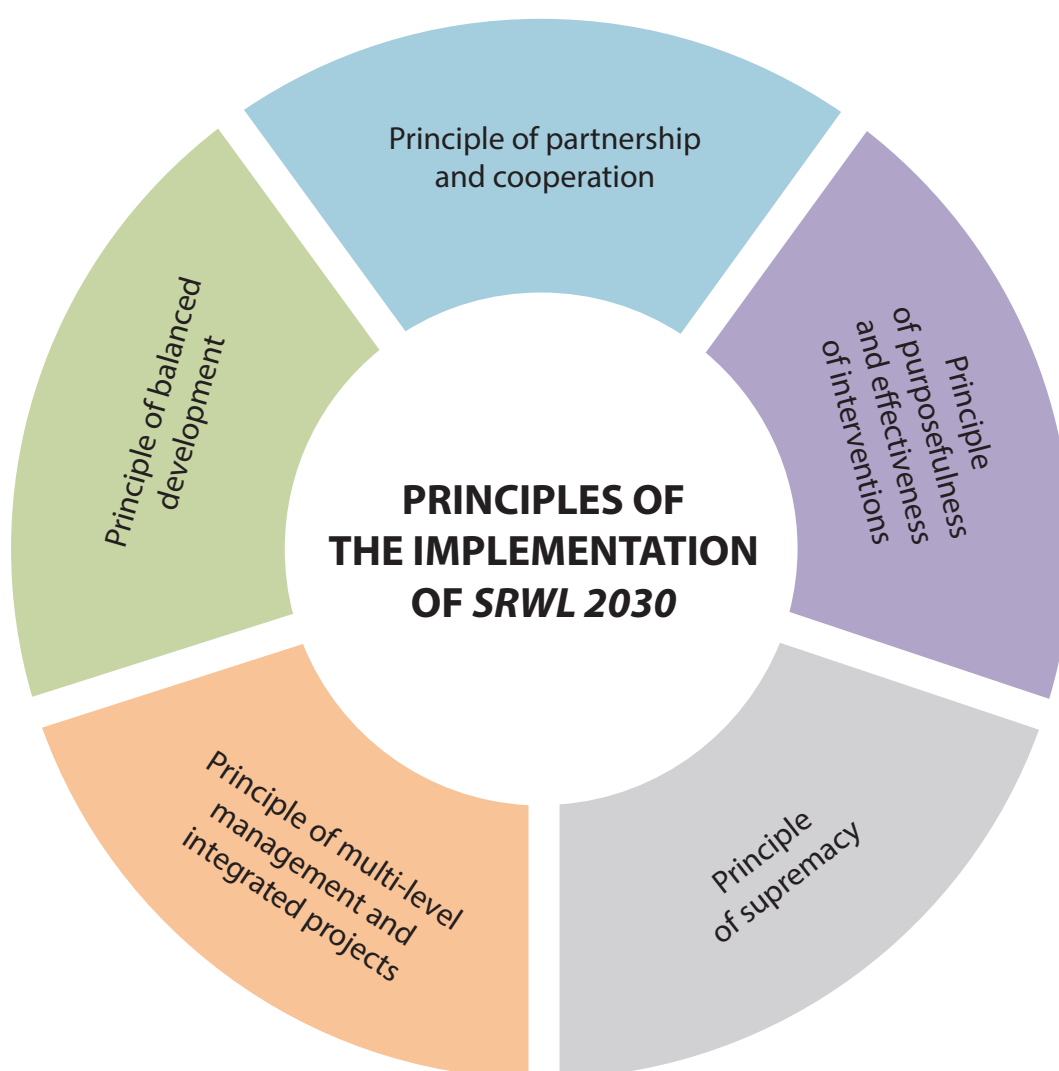
## 7. STRATEGY IMPLEMENTATION FRAMEWORK, MONITORING SYSTEM, SOURCES OF FINANCING

The *Development Strategy for the Lublin Voivodeship* until 2030 aims at the implementation of the principles and goals of the future policy. The implementation process will be conducted as **effective cooperation with many public, local and regional entities, representatives of the private and social sectors.**

### 7.1. STRATEGY IMPLEMENTATION FRAMEWORK

The implementation and introduction of the provisions of the document will be based on the principles defined and adopted in *the Strategy*.

Fig. 9. Principles of implementation and introduction of *SRWL 2030*

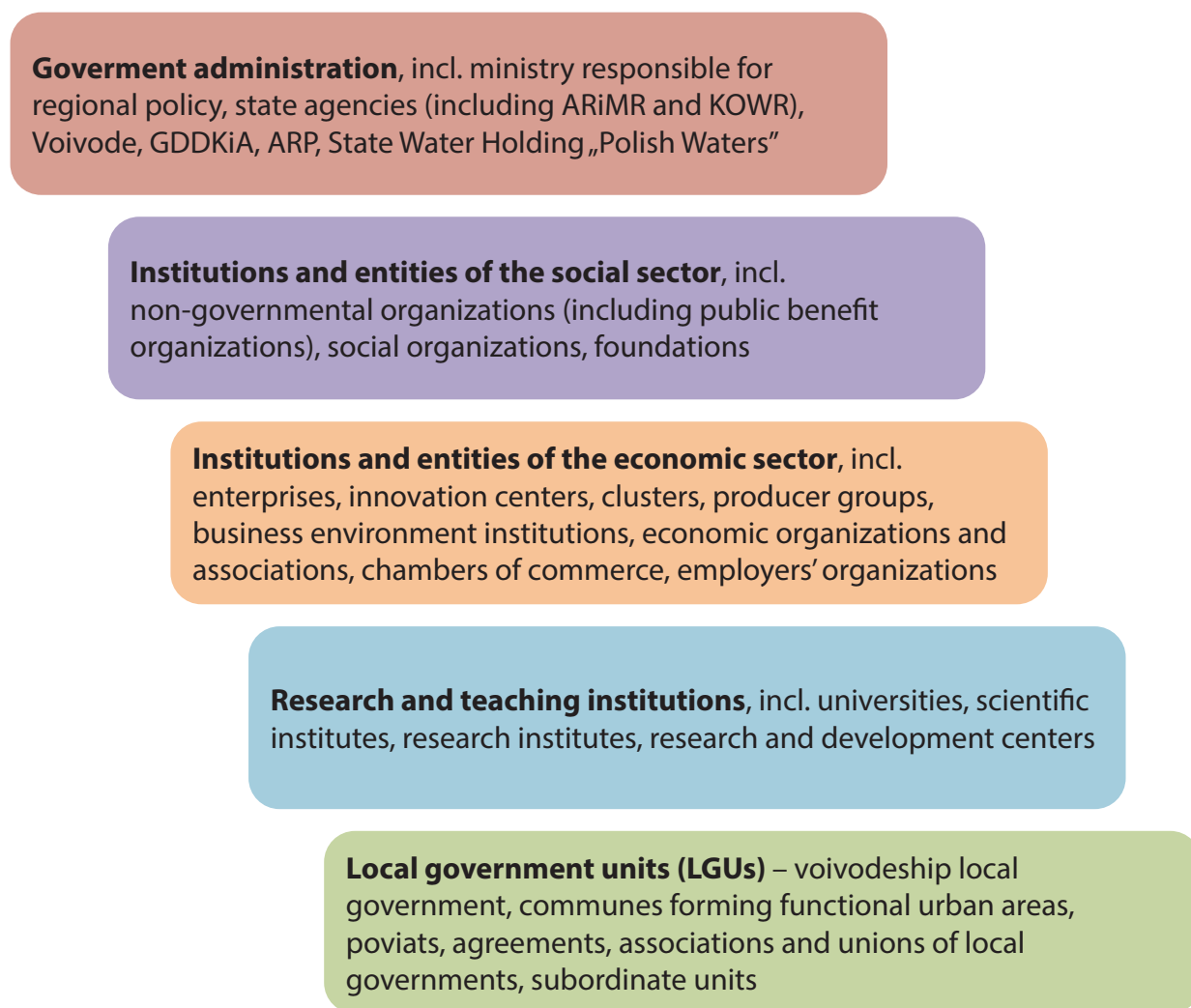


Source: developed by DSiR UMWL, Lublin 2021



Various groups of entities and institutions will be involved in the implementation and monitoring of *SRWL 2030*, including:

Fig. 10. Entities involved in implementation and introduction of *SRWL 2030*



Source: developed by DSiR UMWL, Lublin 2021

## 7.2. MONITORING SYSTEM

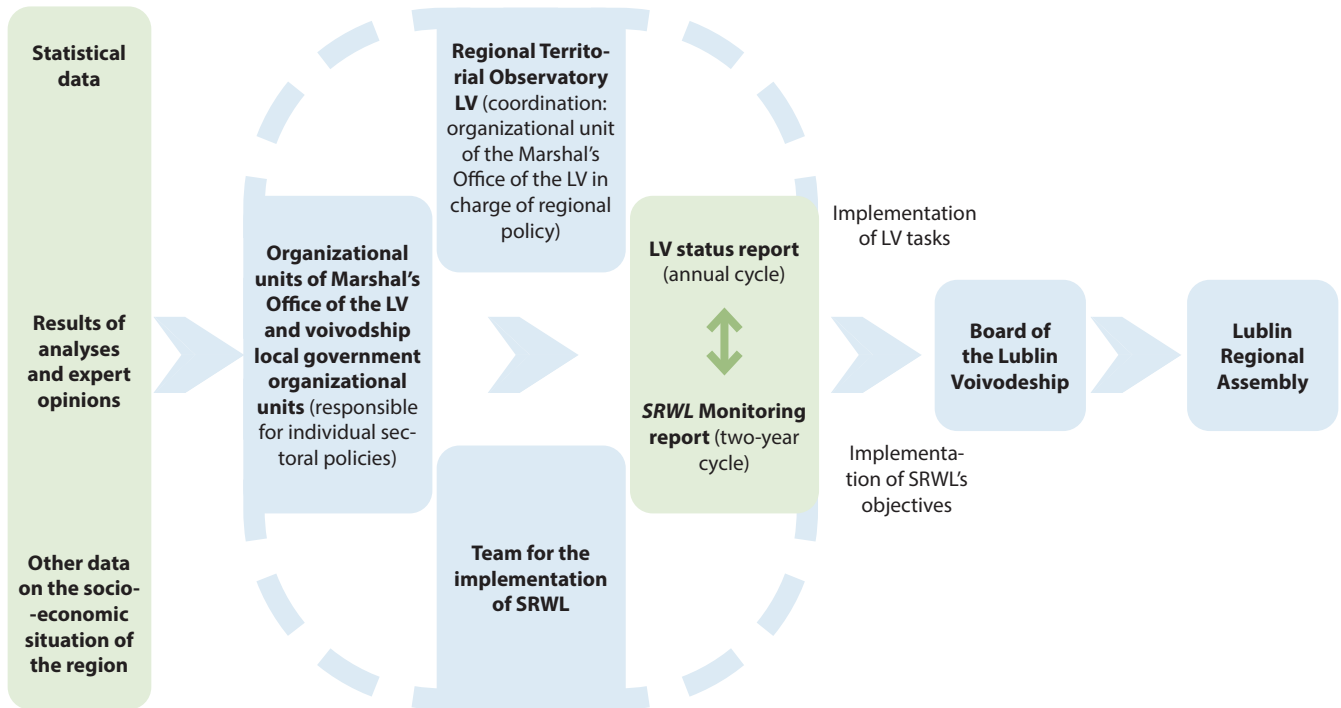
The **monitoring system** is a component of *the Strategy* that provides information on the progress and effects of its implementation. It is based on **systemic observation and analysis** of the values of the adopted implementation indicators and knowledge obtained from specialized institutions, as well as from a wide range of *the Strategy’s* stakeholders.

**The Strategy’s monitoring model** is based on comparable and reliable statistical data obtained with the participation of the regional science and research sector, external experts and a database created as part of the Regional Territorial Observatory (RTO).

The basic components of the monitoring system are as follows:

- Team for implementation of *SRWL 2030*,
- Regional Territorial Observatory,
- Board of the Lublin Voivodeship,
- Lublin Regional Assembly.

Fig. 11. Schematic diagram of the monitoring organization system of SRWL 2030



Source: developed by DSiR UMWL, Lublin 2019 r.

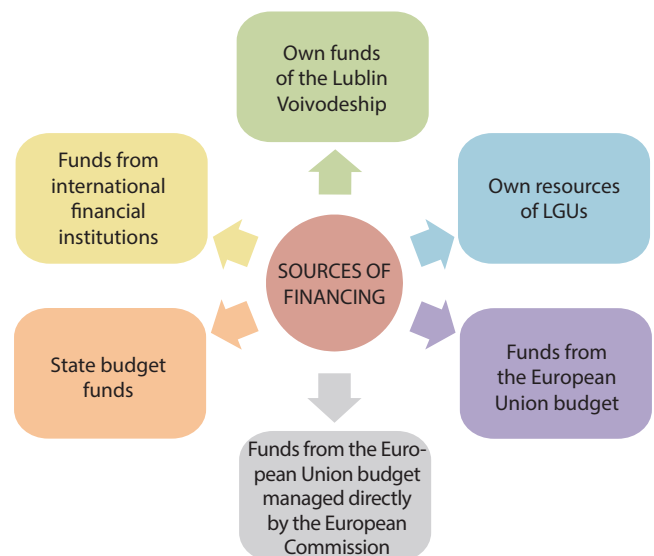
The main document in the monitoring process will be the **monitoring report** prepared in a **two-year cycle**. This document, together with conclusions and recommendations, will be presented to the Board of the Lublin Voivodeship and then submitted to the Lublin Regional Assembly.

### 7.3. SOURCES OF FINANCING

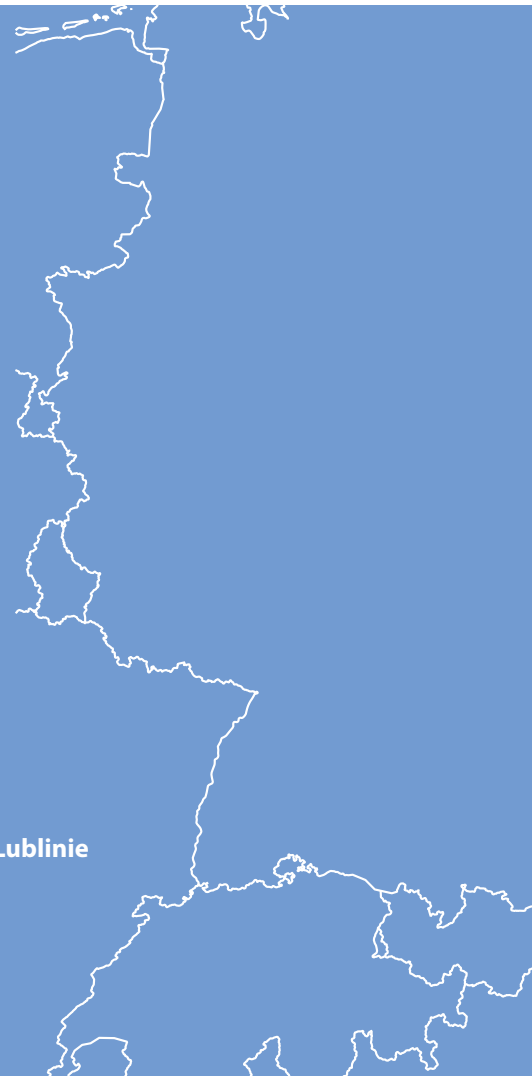
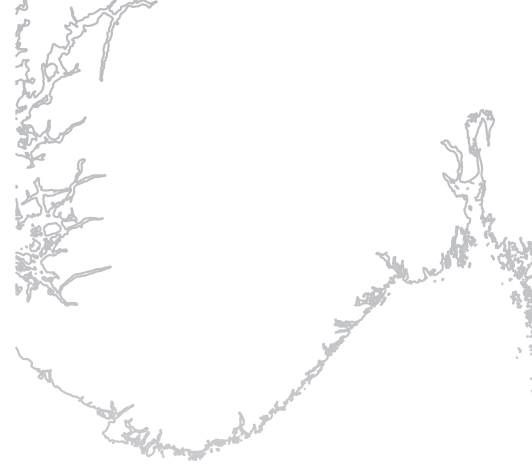
Activities undertaken as part of the implementation of *the Strategy* will be financed from **various sources**. The reduced support for funds from the Cohesion Policy makes the ability to **combine funds from various sources** more important, including the use of national funds and the effective use of the region's own resources.

The catalogue of public funds is very important for the financing of *the Strategy*. Thanks to the implementation of coordination mechanisms, the activities undertaken by public sector entities may be **significantly harmonized and improved** with the directions set out in *the Strategy*.

Fig. 12. Sources of financing of SRWL 2030



Source: developed by DSiR UMWL, Lublin 2021



Urząd Marszałkowski Województwa Lubelskiego w Lublinie  
ul. Artura Grottgera 4, 20-029 Lublin  
ISBN 978-83-963757-8-0